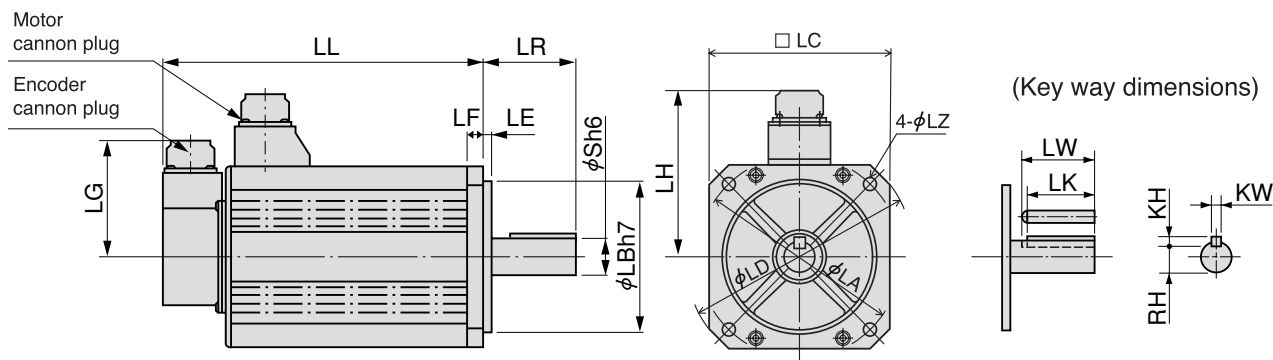


Motor Dimensions

MSMA 1.0kW - 2.0kW



* Dimensions are subject to change without notice. Contact us or a dealer for the latest information

		MSMA series (Low inertia)					
Motor output		1.0kW		1.5kW		2.0kW	
Motor model		10□P1□	10□S1□	15□P1□	15□S1□	20□P1□	20□S1□
Rotary encoder specifications		2500P/r Incremental	17-bit Absolute/ Incremental	2500P/r Incremental	17-bit Absolute/ Incremental	2500P/r Incremental	17-bit Absolute/ Incremental
L L	Without brake	175	175	180	180	205	205
	With brake	200	200	205	205	230	230
L R		55		55		55	
S		19		19		19	
L A		100		115		115	
L B		80		95		95	
L C		90		100		100	
L D		120		135		135	
L E		3		3		3	
L F		7		10		10	
L G		84		84		84	
L H		98		103		103	
L Z		6.6		9		9	
Key way	L W	45		45		45	
	L K	42		42		42	
	K W	6h9		6h9		6h9	
	K H	6		6		6	
	R H	15.5		15.5		15.5	
Mass (kg)	Without brake	4.5	4.5	5.1	5.1	6.5	6.5
	With brake	5.1	5.1	6.5	6.5	7.9	7.9
Connector/Plug specifications		refer to Fig.1, page A4-68					

* Cautions : Reduce the moment of inertia ratio if high speed response operation is required.

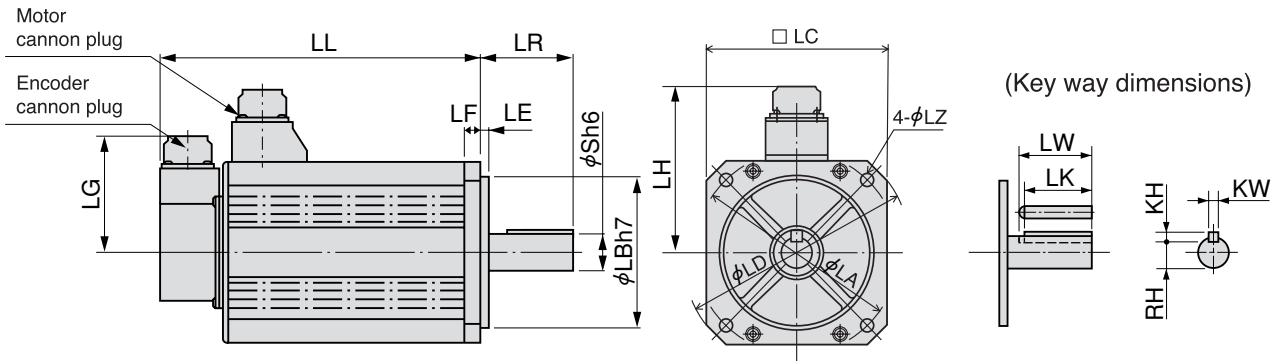
Read the Instruction Manual carefully and understand all precautions and remarks before using the products.

Motor Dimensions

MINAS A4

MSMA / MSMA
1.0kW - 2.0kW / 3.0kW - 5.0kW

MSMA 3.0kW - 5.0kW



* Dimensions are subject to change without notice. Contact us or a dealer for the latest information

		MSMA series (Low inertia)					
Motor output		3.0kW		4.0kW		5.0kW	
Motor model		30□P1□	30□S1□	40□P1□	40□S1□	50□P1□	50□S1□
Rotary encoder specifications		2500P/r Incremental	17-bit Absolute/ Incremental	2500P/r Incremental	17-bit Absolute/ Incremental	2500P/r Incremental	17-bit Absolute/ Incremental
LL	Without brake	217	217	240	240	280	280
	With brake	242	242	265	265	305	305
LR		55		65		65	
S		22		24		24	
LA		130/145 (slot)		145		145	
LB		110		110		110	
LC		120		130		130	
LD		162		165		165	
LE		3		6		6	
LF		12		12		12	
LG		84		84		84	
LH		111		118		118	
LZ		9		9		9	
Key way	LW	45		55		55	
	LK	41		51		51	
	KW	8h9		8h9		8h9	
	KH	7		7		7	
	RH	18		20		20	
Mass (kg)	Without brake	9.3	9.3	12.9	12.9	17.3	17.3
	With brake	11.0	11.0	14.8	14.8	19.2	19.2
Connector/Plug specifications		refer to Fig.2, page A4-68					

* Cautions : Reduce the moment of inertia ratio if high speed response operation is required.

Read the Instruction Manual carefully and understand all precautions and remarks before using the products.